

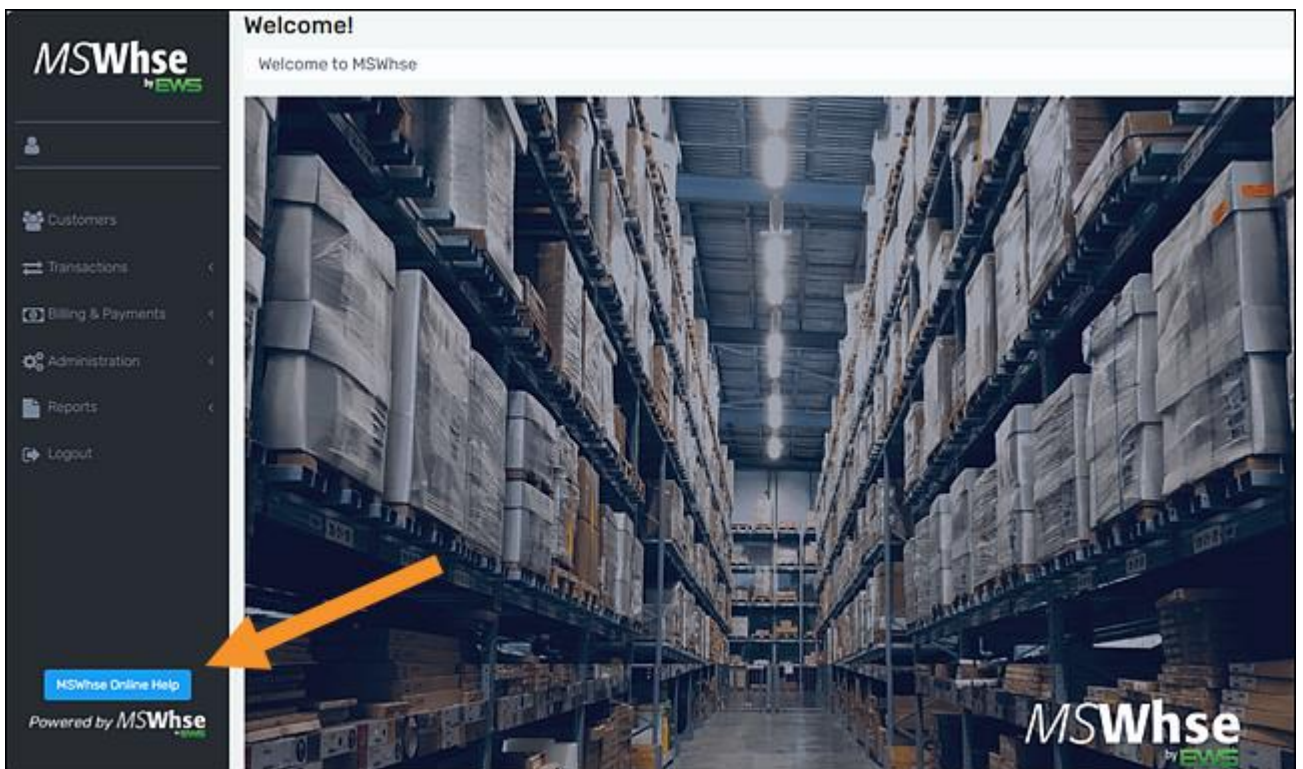
MSWhse March 2025 Features

In addition to numerous behind-the-scenes updates, the following fix is in this release.

Extra!

MSWhse Online Help is available through the new button within MSWhse.

Located in the lower left corner of the MSWhse screen, this new button will take you to the MSWhse Online Help. The MSWhse Online Help will open in a new tab and will always have the most up to date information on MSWhse.



NOTE: The MSWhse Online Help video has been updated to reflect recent changes, including the MSWhse Online Help button and updates to the format of the MSWhse Online Help. Click the video name below to see this quick video. This video is located on the [MSWhse Support](#) > User Guides and Videos > Learn how to use the Online Help link.



[MSWhse Online Help](#)

RELATED TOPIC:

[MSWhse Online Help Tips](#)

INTERNAL REFERENCE: WD-4238

MSWhse March 2025 Enhancement

In addition to numerous behind-the-scenes updates, the following enhancements are in this release.

Customers

New functionality supports Default Rates by Customer.

Set Default Rates at the Customer level using the three new fields located within **Customers**: Handling In, Storage, and Handling Out. Default Rates can be set when creating a new Customer or updating an existing Customer.

Default Rates are set within **Customers > Profile Tab**. The options available from the dropdowns within each field are the rates established within **Administration > Base Rates**.

To update information for these fields for an existing Customer:

1. From **Customers**, choose a Customer.
2. From the **Profile tab**, click the green edit button to edit the information for that Customer.
3. At the bottom of the Edit Customer screen, enter data within the three new fields.
4. Click Save.



The screenshot shows a form with two main sections. The first section is titled "Associated Warehouse(s)" and contains a "Warehouse" dropdown menu. The second section is titled "Default Rates" and is highlighted with an orange border. It contains three dropdown menus: "Handling in", "Storage", and "Handling out".

When adding a new Customer, simply choose options for these fields on the Add New Customer screen within **Customer Setup**.

Rates set within **Customers > Item Numbers Tab** can override the Default Rates set on the **Profile Tab**. The Default Rates section may not show on the **Profile Tab** until the Default Rates are set.

RELATED TOPICS:

Profile Tab
Base Rates

INTERNAL REFERENCE: WD-4274

Transactions

New popup Confirmation screen appears when deleting an item on a Transaction.

When user clicks the delete icon on an item from Item List within the Inbound or Outbound screens (indicated by the orange outline within Figure 1), the new confirmation screen will appear asking for verification of whether that item is to be deleted. This will help to prevent an item from accidentally being deleted from a transaction.

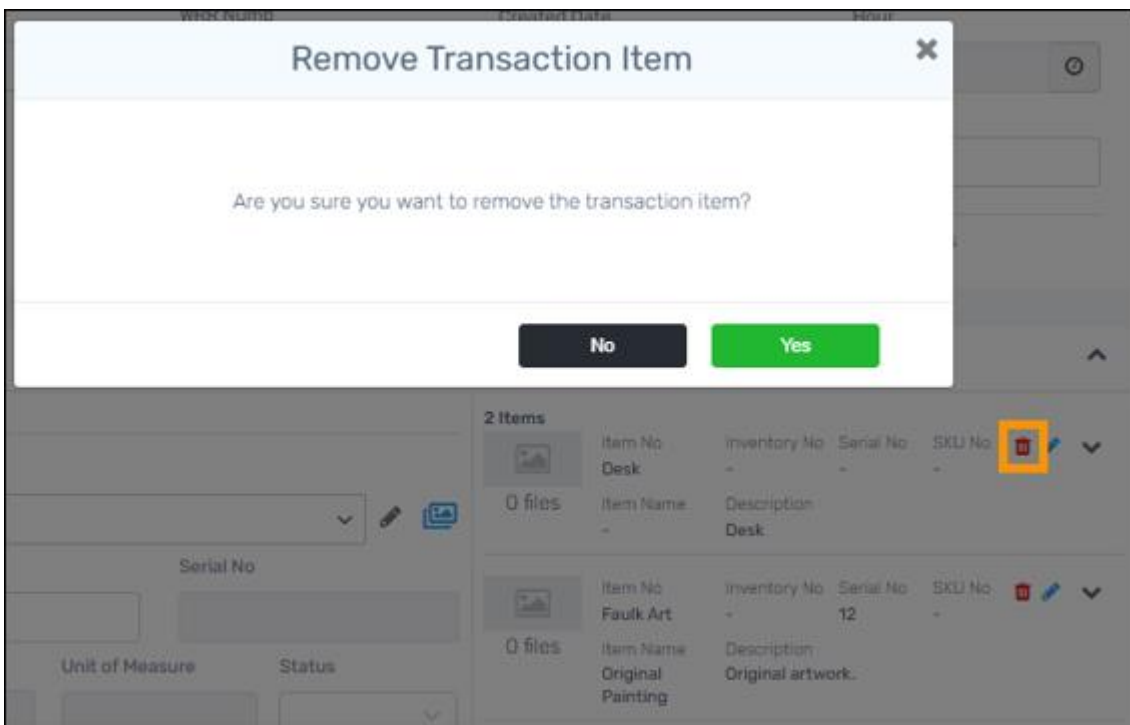


Figure 1: The "Remove Transaction Item" screen appears when the delete icon is clicked, as indicated.

INTERNAL REFERENCE: WD-4269

Administration

Creating a new warehouse is password protected

To have a new warehouse added to MSWhse, contact your MSWhse Support Team through the [Help Desk](#) who will take care of that for you. Should a user attempt to create a warehouse through [Administration](#) >

Warehouses, when the +New Warehouse button is clicked, the new Warehouse Authorization screen appears(Figure 3). This screen requires the password to proceed. This prevents the unauthorized creation of warehouses.



Figure 2: +New Warehouse button

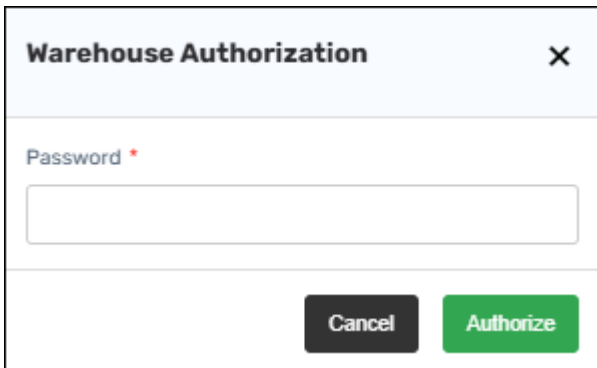


Figure 3: Warehouse Authorization screen

If the incorrect password is entered, this warning appears.

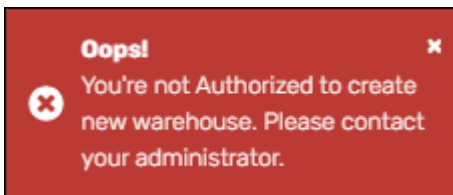


Figure 4: Response when entered password is incorrect.

INTERNAL REFERENCE: WD-4239


Reports

A "Created By" column has been added to the Transaction History report

Inventory changes are now tracked by user within the **Transaction History Report**. The new column named "Created By" has been added to this report for this data. If the report has a "-" in the column, the transaction or adjustment occurred before this release when this data was not tracked.

Transaction History Report

Reports > Transaction History Report

Customer * Belmont Academy Item No * Desk  [See Results](#)

4 Results

Warehouse	Location	Pallet	Vault	PO No	Serial No	Inventory No	Expiration Date	Transaction Type	Quantity	Created By	Creation Date
CM14	F0202	-	103	-	-	-		Inbound	5	Joe Eckert	Mar 24, 2025, 7:56:28 PM
CM14	D6A	-	135	-	-	-		Outbound	-9	Joe Eckert	Mar 24, 2025, 7:55:02 PM
CM14	D6A	-	135	-	-	-		Adjustment	-1	Joe Eckert	Mar 24, 2025, 7:53:23 PM
CM14	D6A	-	135	-	-	-		Inbound	10	-	Jan 21, 2025, 5:53:09 PM

Figure 5: Transaction History Report with new Created By column.

INTERNAL REFERENCE: WD-4281