

MoversSuite

by **EWS**

MoversSuite Version 2024.07

RELEASE DATE: April 1, 2024

Version 2024.07 Notices

New Format for Release Information

To better present the information on our numerous products, the release notes' have been reorganized into the following categories: MoversSuite, MoversSuite Administration, and MSWeb. Within those categories, the Features, Enhancements, and Bugs will be identified with these icons:



New Information Alert

Each release update now includes a new table called **New Videos**. Located on Version Summary, this table lists any new videos added to the Online Help within the release.

Version 2024.07 Summary

The following table contains the counts of the following items related to this release, as well as Year-to-Date totals.

#	Change Summary	YTD #
2	New Product Feature	4
2	Release Enhancement	11
	Release Fix	28
	Schema Change (tables affected)	2
	Admin Changes	7
	Standard Reports Affected	

Release Hyperlinks:

[Printable Release Notes](#)

[System Requirements](#)

[Release Highlights](#)

Other Hyperlinks:

[Open the Online Support Page](#)

[Access our Product Feedback Site](#)

Documentation Changes

This section features the topic name changes affected within the Online Help at this release.

New Topic
On Work Ticket Generation Setup
Required Fields List

New Video

This section features the new video available within the Online Help at this release.

See the Release Overview Video within [Version 2024.07 MoversSuite](#)

Find all the latest videos through our [Training Center](#).

Version 2024.07 MoversSuite

This section lists the features added to MoversSuite and MoversSuite integrations.

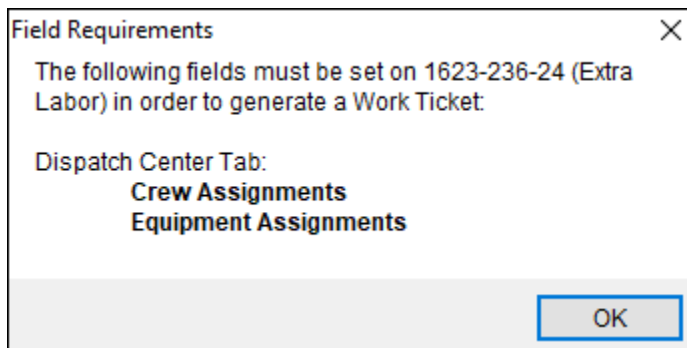
Release Overview Video



Local Dispatch FEATURE

Crew Assignments and Equipment Assignments can be made required fields for Work Ticket generation.

It is now possible to require Crew Assignments and/or Equipment Assignments to be made before a [Work Ticket](#) can be generated. Should an attempt be made to create a Work Ticket and a required field is not assigned, an error message will appear stating which required field(s) needs assignment.



When using “Combine On Work Ticket” to add several services to a single work ticket, the required fields are still required. Should four services be combined, the required fields only need to be assigned on one service for each required field; therefore, if both Crew Assignments and Equipment Assignments are set as required fields, Crew Assignments can be made on one service and Equipment Assignments can be made on another service (or even the same service) and the required fields will be considered fulfilled. See [On Work Ticket Generation Setup](#) for more details.

Creating these required fields does require setup within the new setup area, [On Work Ticket Generation Setup](#). See [Version 2024.07 MoversSuite Administration](#) for the release overview on the setup for this functionality and [On Work Ticket Generation Setup](#) for instructions and additional details.

INTERNAL REFERENCE: MOV-7117

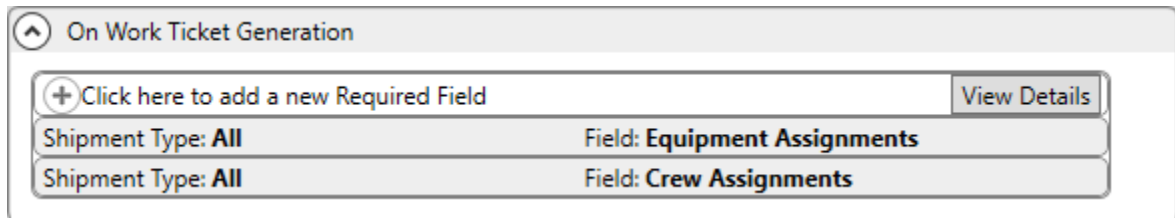
Version 2024.07 MoversSuite Administration

This section lists the improvements made within [MoversSuite Administration](#) (also known as the [Admin Tool](#).)

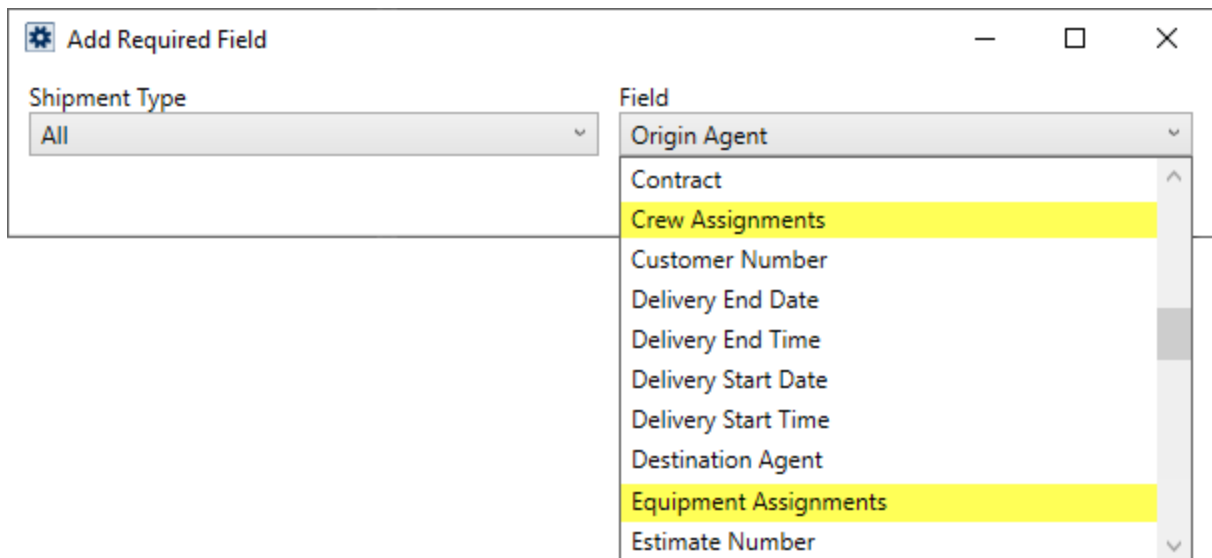
Field Requirements Setup FEATURE

“On Work Ticket Generation Setup” is new!

This new setup area, On Work Ticket Generation, enables the ability to require Crew Assignments and/or Equipment Assignments be set before a new [Work Ticket](#) can be generated.



Within this setup, the most important items to set as a “new Required Field” are the Crew Assignments and Equipment Assignments options, located under Field in the [Add Required Field](#) screen. Though many options are listed under Field, only Crew Assignments and Equipment Assignments can be chosen. Should any other option be selected, a message will appear indicating that only these options can be chosen for that field in this setup. For Shipment Type, enter All. Although any option within the dropdown can be selected, this setup is for an “On Work Ticket Generation” event and All is the option that is appropriate for this setup.



See [Version 2024.07 MoversSuite](#) for more information on the functionality.

INTERNAL REFERENCE: MOV-7117

RELATED INFORMATION:

[Required Fields](#)

Version 2024.07 MSWeb

This section lists the fixes made to MSWeb.

Functionality ENHANCEMENT

Within Move Information, enhanced section design for better functionality.

There is a lot of information within Move Information. This update better balances the need for data, layout and functionality within fields, especially in regard to the wide range of screen sizes in use among our users. Some specific enhancements are:

- Ensuring ability to operate within fields is maintained throughout screen resizing.
- Adjust the “breakpoints” so that 3-column layouts decrease to 2 when necessary.
- Maintain a minimum size allowed to ensure screen sizes permitted allow for a good user experience.

INTERNAL REFERENCE: MOV-7120

Materials, Packing, and Unpacking sections have better logic to keep data organized with screen resizing.

When reducing a screen size in these sections, the data tables now adjust so that data remains organized when viewed on a wide range of screen sizes.

INTERNAL REFERENCE: MOV-7121

Version 2024.07 Database Changes

The following table lists changes made to the MoversSuite database for this release.

NO SCHEMA CHANGES IN THIS RELEASE

MOVERSSUITE DATABASE SCHEMA RESOURCES:

[Tables Listing](#)

[Documents Table Listing](#)

[Data Views Listing](#)

RELATED TOPIC:

[Schema Changes](#)

Version 2024.07 Release Requirements

For software compatibility for this version of MoversSuite, see [Software Compatibility](#).

For all requirements, see:

[System Requirements](#)

[Hardware Requirements](#)

[Software Requirements](#)

Recent Changes

This section lists changes to the requirements that affect this specific version of MoversSuite.

NO RECENT CHANGES TO RELEASE REQUIREMENTS

Version 2024.07 Known Issues

The following issues are problems that may affect your decision to upgrade to this version of MoversSuite. The following issues are not resolved for this release.

QuickBooks Support for IE11 Deprecating for Authorization Screens (September 8, 2020)

Due to security requirements, starting Sept. 8, 2020, only Chromium-based embedded browsers will be supported for **QuickBooks Online Connection Authorization** screens and Internet Explorer 11-based embedded browsers will no longer work.

For authorization process in MoversSuite, the previous two versions of Google Chrome, Mozilla Firefox, Microsoft Edge, and Safari (11+) are supported. This is for the users who first turn the QuickBooks feature on. Or, in case, the feature is being used after a long while. Refer to [this blog](#) for further details on changes made.

Supported Windows Themes

Related to the scaling issue (listed below), MoversSuite recommends that if your client server is on Windows 10, that you avoid using themes developed for earlier versions of Windows. In other words, please load and use themes developed for the current version of Windows that you are on.

NOTE: The Aero theme works well with Windows Server 2008 R2. Reference the following video as a guide to installing the theme service and theme itself:
https://www.youtube.com/watch?v=Q_8VopNXVhE

Here is a link to additional information on Desktop Themes:
<https://support.microsoft.com/en-us/help/13768/desktop-themes-featured>

Screen scaling not available with MoversSuite

With the advances in screen size and resolution, many underlying applications are not able to deal with all the variations in configurations available to the variety of high definition (HD) screens, such as not being able to read field labels, etc. Due to this limitation, MoversSuite cannot scale as desired in all situations. **UPDATE:** With the release of MoversSuite 2018 R15, a solution has been implemented to address many of the issues involving scaling. (3705, 4114)

Until there is a better solution to scaling, EWS Group recommends that if you experience scaling problems with the MoversSuite application keep the size of your application to 100% and change the resolution as desired. On Windows machines, you can verify and/or update the display settings as follows:

1. Right-click somewhere on your desktop and select **Display Settings**
2. Set the **Change the size of text, apps, and other items** to 100%.
3. Click on **Apply** to save the changes.
4. Click on **Advanced display settings**.
5. Make changes to the **Resolution** as needed.
6. Click on **Apply** to save the changes.
7. Close the screen by pressing the **X** in the upper right-hand corner of the screen.